



Description

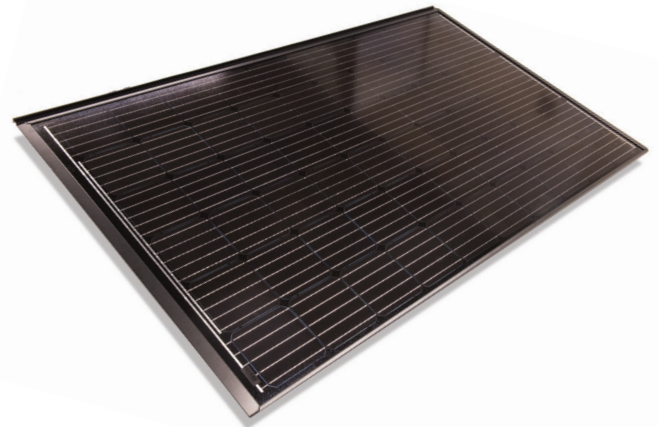
The sleek, black, low-profile design of the GAF DecoTech™ Solar System delivers performance and curb appeal at an affordable price.

Product Installation

Refer to the DecoTech™ Application Instructions for details on how to install the DecoTech™ Solar System.

Design Considerations

- DecoTech™ Module Assembly must be installed in landscape mode.
- The roof deck must be a minimum of 15/32" thick plywood or 7/16" thick OSB decking.
- DecoTech™ Module Assemblies are intended for use solely on roofs having a slope between 4:12 and 12:12.
- DC optimizers or AC inverters can be used.
- Asphalt shingle installations only.



Technical Specifications

Model Number	RI 2000
PV Laminate	Siifab SLA Mono
Maximum Power under STC* (Pmax)	310 Wp
Open Circuit Voltage under STC (Voc)	40.25 V
Maximum Power Point Voltage under STC (Vmpp)	33.05 V
Short Circuit Current under STC (Isc)	9.93 A
Maximum Power Point Current under STC (Impp)	9.38 A
Module Efficiency under STC (ηm)	19.0%
Temperature Correction Factor TC Voc	-0.30%/C

Cells per module	60
Cell type	Monocrystalline
PV Connector Type	PV wire with MC4 compatible
PV Laminate Front	3.2 mm high transmittance, tempered, ar coating
PV Laminate Back	Multi-layer Polymer Backsheet
Frame	Black Powder Coated Aluminum
Weight	44.4 lb. (20.14 kg)
Operating Temperatures	-40 to +185°F (-40 to +85°C)
Design Loading	50 lb./ft² (244 kg/m²) Positive Design Load
Certifications	SLA-M300 M310 UL 1703
Fire Rating	DecoTech™ Frame: UL 2703

Dimensions

